

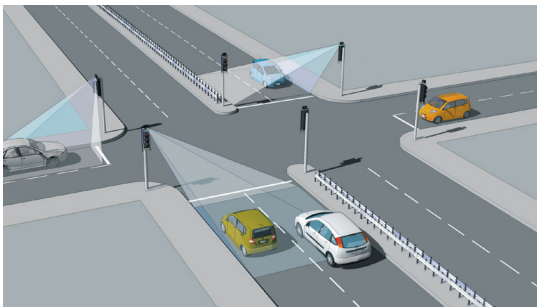
AGD307

Traffic Control Radar



The AGD307 is a smart FMCW radar which is designed to make vehicle movements at Traffic Control Installations more efficient. The design is also robust, cost-effective and highly configurable which also makes it suitable for multiple Intelligent Transport Systems (ITS) management applications.

This product has been designed to be highly versatile for a host of global traffic applications including; Intersection Control, Sign Activation and Temporary Traffic Control. The 307 Doppler radar operates in the 24GHz band. Its very compact size belies the outstanding detection performance offered by this entry level radar.



Intersection control



Sign Activation



Temporary traffic control



KEY FEATURES

- Vehicle radar detection for multiple applications
- Technically advanced detection platform
- Modern, compact stand-alone detector
- Cost-effective solution
- Dual lane monitoring
- Approach or bi-directional detection
- User adjustable parameters via DIP and rotary switches
- User selectable low speed threshold typically 4kph or 8kph via DIP switch
- User adjustable parameters via optional RS422 interface
- Solar powered options (<1W at 12Vdc)
- 4kph-120kph adjustable low speed threshold

AGD307

Traffic Control Radar

AGDTOUCH

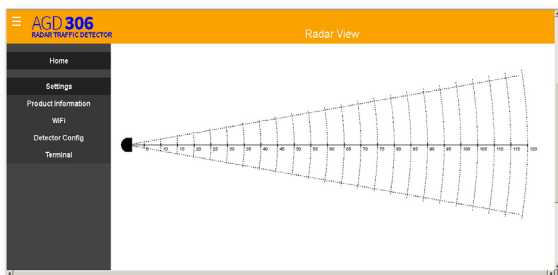
WiFi 3 Click Setup

WiFi AGD TOUCH-SETUP

The AGD307 is quick to setup using any WiFi device – smart-phone, tablet or laptop – with its unique & secure AGD Touch-setup that allows installers to configure the device in three simple steps:

1. Name device
2. Configure settings
3. Click to save

Multiple AGD detectors may be setup at the same time from a safe position on the ground, or in a vehicle up to 20m away. Conveniently, the AGD306 can be adjusted for setting changes just as quickly in the same way.

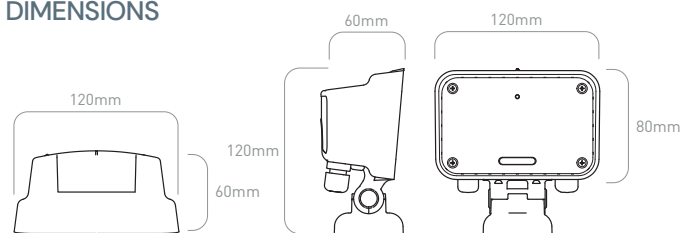


Flexible detector configuration

PRODUCT SPECIFICATION

| | |
|--------------------------------|--|
| Description | Traffic Control Radar |
| Technology | CW Doppler Radar |
| Frequency | K-band 24GHz |
| Range/Zone | Up to 150m (user selectable) |
| Mounting Height | 2–5m nominal |
| Low Speed Threshold | 4 kph to 120 kph (user selectable) |
| Direction | Advancing or bi-directional (user selectable) |
| Weight | 0.4 Kg nominal |
| Housing Material | Polycarbonate (UL94 V-2) |
| Housing Finish | Self coated black |
| Sealing | IP65 |
| Operating Temp | -25°C to +60°C |
| Power Supply | 12Vdc /24Vac/dc/230Vac (see Power Options P7) |
| Detect Output | Opto-Isolator/Relay/RS422 (speed output) |
| Configuration Interface | DIP switch and rotary switch access on rear face or optional RS422 |
| MTBF | >20 Years (with a 90% confidence, estimated using field data from 10,000 installed units over a 3-year period) |
| EMC Specification | EN301-489 and BSEN50293 |
| Radio Specification | ETS 300.440 |
| Electrical Safety | EN60950 |

DIMENSIONS



TESTED AND AGD CERTIFIED

All AGD products are Tested, Calibrated and AGD Certified so customers know that all devices will perform exactly as described.

AGD[®] | SAFER
GREENER
MORE EFFICIENT

AGD Systems Limited
White Lion House, Gloucester Road
Cheltenham, GL51 0TF, UK

Tel: +44 (0) 1452 854212

Email: info@agd-systems.com

Web: agd-systems.com