

AGD306

Traffic Control Radar



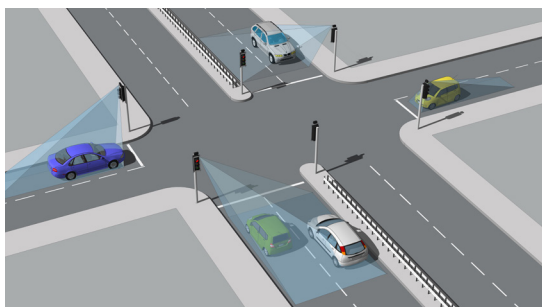
The AGD306 is a smart FMCW radar which is designed to make vehicle movements at Traffic Control Installations more efficient. The design is also robust, cost-effective and highly configurable which also makes it suitable for multiple Intelligent Transport Systems (ITS) management applications. T A T A

The radar operation is 'trickle-down' technology from the proven and approved AGD range of speed enforcement products giving it significant pedigree at this level of product.

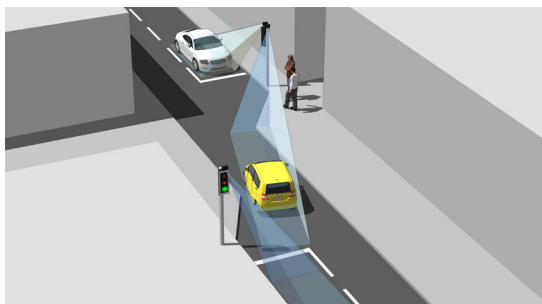
Configuration of the radar's settings is via the unique WiFi AGD Touch-Setup which allows users to set and monitor the radars performance wirelessly from a smart-phone or tablet without any proprietary software or app.

The most compact, wirelessly configurable, FMCW Traffic Control Radar available.

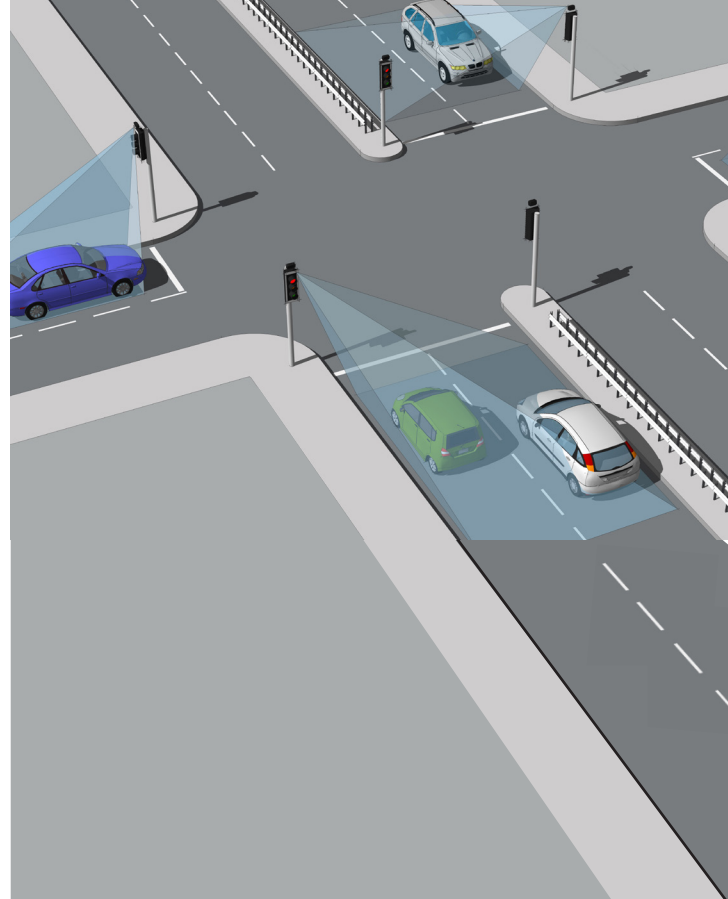
The AGD306 has outstanding detection performance based on accurate range measurement and target tracking. Low power consumption and excellent rejection of spurious inputs can boost the performance of traffic control installations.



Intersection control



Shuttle operation



KEY FEATURES

- Easy setting configuration means one product for many applications
- Range configurable up to 120m
- Accurate detection zone for improved host system efficiency
- Performance is super tolerant to weather conditions and other sources of interference
- WiFi AGD Touch-setup - speeds installation & reduces risk
- Huge 50% Reduction in power consumption on previous AGD206 product
- Architecture based on 32 bit ARM® Cortex® processing core

AGD306

Traffic Control Radar

AGD TOUCH

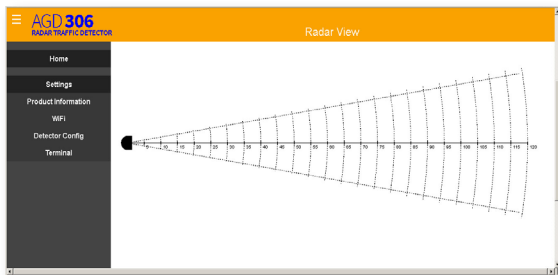
WiFi 3 Click Setup

WiFi AGD TOUCH-SETUP

The AGD306 is quick to setup using any WiFi device – smart-phone, tablet or laptop – with its unique & secure AGD Touch-setup that allows installers to configure the device in three simple steps:

1. Name device
2. Configure settings
3. Click to save

Multiple AGD detectors may be setup at the same time from a safe position on the ground, or in a vehicle up to 20m away. Conveniently, the AGD306 can be adjusted for setting changes just as quickly in the same way.



Flexible detector configuration

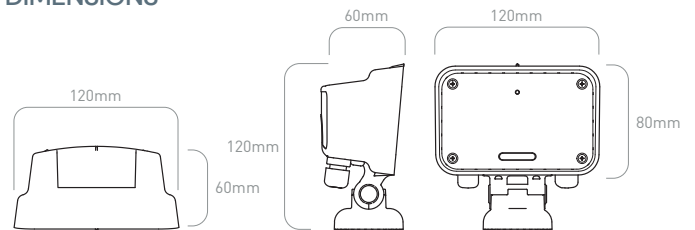
The smart AGD306 replaces the AGD306 product which is installed at over 10,000 sites in numerous countries around the world. The AGD306 has lower power consumption, more accurate detection performance, greater functionality and easy set-up.

PRODUCT SPECIFICATION

Description	Traffic Control Radar
Technology	24GHz FMCW Radar
Detection Range	5 to 120m (user selectable)
Mounting Height	2–5m Nominal
Power Supply**	12V dc to 24V ac/dc
Current	70mA (@12V) Typical & 35mA (@24V)
Detect Output	Single Opto
LED Indication	LED for detect and WiFi connection
Detection Threshold	4 to 8kph (user selectable)
Housing Material	Black Polycarbonate
Sealing	IP65
Operating Temp	-20°C to +60°C
Configuration	WiFi AGD Touch-setup
Dimensions	W 120mm x D 60mm x H 120mm
Weight	350g Typical
Complies with	EMC: EN 50293, EN 301 489 H&S: EN 62368-1, EN 60950-22 EN 62311, Spectrum: EN 300 440, EN 300 328, RoHS: EN 50581 S/NZS 4268
Specification	TOPAS 2505A

** 230V ac supply option

DIMENSIONS



TESTED AND AGD CERTIFIED

All AGD products are Tested, Calibrated and AGD Certified so customers know that all devices will perform exactly as described.

AGD® | SAFER
GREENER
MORE EFFICIENT

AGD Systems Limited

White Lion House, Gloucester Road
Cheltenham, GL51 0TF, UK

Tel: +44 (0) 1452 854212

Email: info@agd-systems.com

Web: agd-systems.com