

# AGD318

## Traffic Control Radar



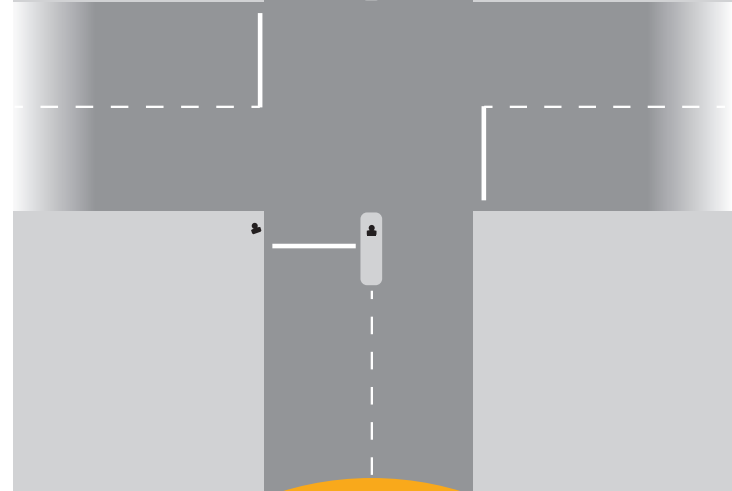
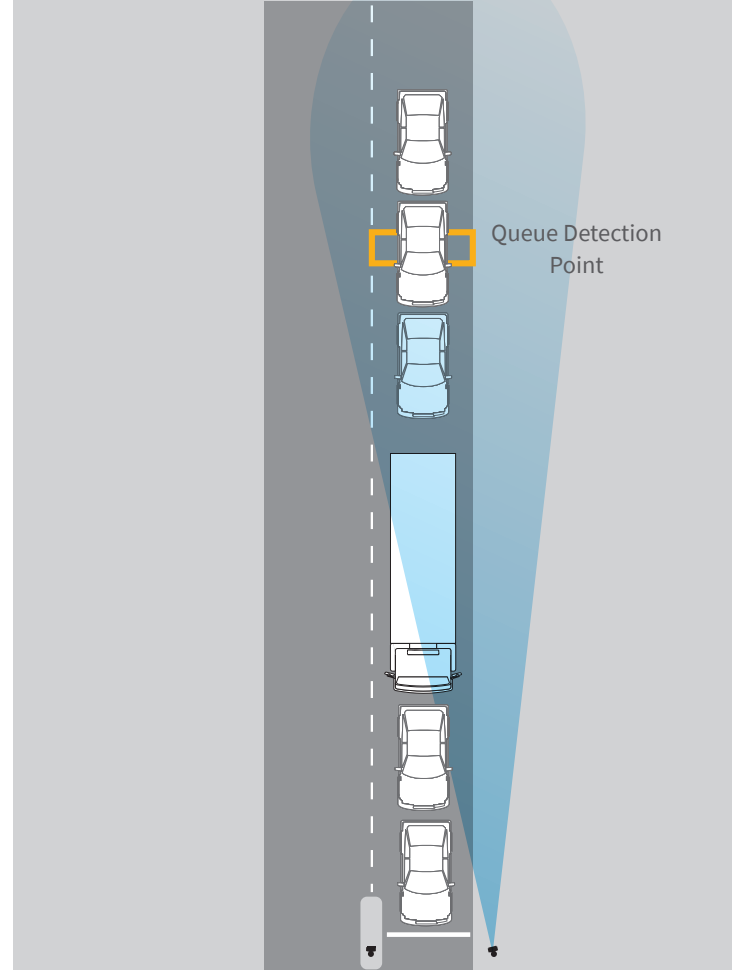
The AGD 318 Traffic Control Radar is a 'next-generation' product that realises junction efficiencies by bringing a flexible cost-effective solution that's easy to deploy, setup and maintain. It is a single-lane multi-loop-replacement radar with stationary vehicle recognition for queuing traffic detection. The 318 is ideal for use on approaches to pedestrian crossings & junctions and a complete detection solution for MOVA schemes.

Developed from enforcement-grade technology, the AGD 318 is a 'smart' non-intrusive alternative to wear & tear prone loop and magnetometer detection in single-lane environments. This device improves safety and efficiency in MOVA 'In' and 'X' detection, System D and Double Extension applications, and also in cyclist, HGV and bus detection & differentiation 'green wave' applications.

Installation & setup is cost-effective as 318's are mounted on existing poles – no road closures for loop cutting or cable channelling, they're maintenance free too. The 318 has opto-outputs which are easily integrated into controllers – and the standout benefit of AGD Touch-setup. This allows the configuration of multiple units at ground level or the comfort of a vehicle – a great saving in time and exposure to traffic risk.



The 318's accurate virtual-loop technology, with speed discrimination & stationary detection can emulate two inductive-loops up to a range of up to 150 metres, or lane-specific detection up to 40 metres with one 318 per lane. In traffic control applications, the 318 tracks up to 12 targets and 'reports' when virtual-loops are triggered. The 318 can make loops 'smart' as well – for example, to prioritise buses over cars at bus-gates.



## KEY FEATURES

- Approach & Recede Detection
- Stationary/Queuing Traffic Detection
- MOVA Compatible In & X
- Accurate Virtual-loop Technology
- Low Install & Maintain Costs
- Simple WiFi AGD Touch-setup

# AGD318

## Traffic Control Radar

### AGD TOUCH

WiFi 3 Click Setup

#### WiFi AGD TOUCH-SETUP WITH QUICK-PLACE VIRTUAL-LOOP TOOL

The 318 is quick to setup using any WiFi device – smart-phone, tablet or laptop – with its unique & secure AGD Touch–setup that allows installers to configure devices in simple steps.

1. Observe the radar's real-time 'view'
2. Place loops accordingly and apply filters
3. Click to save

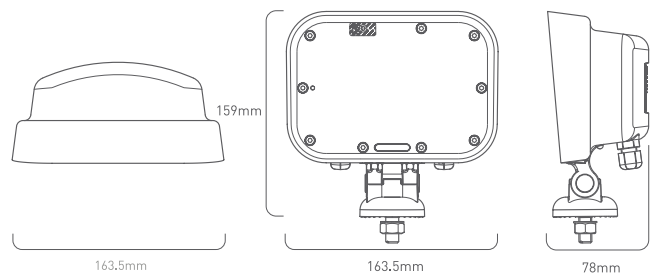
Virtual loops may be 'moved' just as easily in the same way and configurations preloaded onto multiple or replacement units to save deployment time.



#### PRODUCT SPECIFICATION

<b>Technology</b>	FMCW Radar Technology
<b>Target Tracking</b>	Discriminates between individual approaching/receding/bi-directional
<b>Range</b>	6m up to 150m
<b>Speed Measurement</b>	4–300kph (variant dependent)
<b>Power</b>	225mA / 2.7W @ 12Vdc
<b>Detect Output</b>	Opto, RS422
<b>Housing Material</b>	Black polycarbonate
<b>Sealing</b>	Sealing IP65
<b>Operating Temp</b>	–20°C to +60°C
<b>Configuration</b>	WiFi AGD Touch–setup (or RS422)
<b>Dimensions</b>	W 163.5 x D 78mm x H 159mm
<b>Weight</b>	0.7kg
<b>Testing</b>	Full test cycle – AGD Certified
<b>Approvals</b>	ETSI EN 301489, BS EN 50293, ETSI EN 300 440, BS EN 60950, FCC (Part 15) AS/NZS 4268

#### DIMENSIONS



#### TESTED AND AGD CERTIFIED

All AGD products are Tested, Calibrated and AGD Certified so customers know that all devices will perform exactly as described.

**AGD**® | SAFER  
GREENER  
MORE EFFICIENT

AGD Systems Limited  
White Lion House, Gloucester Road  
Cheltenham, GL51 0TF, UK

Tel: +44 (0) 1452 854212

Email: [info@agd-systems.com](mailto:info@agd-systems.com)

Web: [agd-systems.com](http://agd-systems.com)